



LIFE  
SPACE  
HOMES

नींव आपके सपनों की....

YASH

LIFESPAC E



3 & 4 BHK Ultra  
Luxury Apartments



## ABOUT YASH LIFESPACE

The historical city of Kanpur is on the brink of renewed resurgence with sustained real estate, industrial and trading growth over the past few years. Life style patterns have changed and "comfort living" is the new buzz on the horizon. With the city limits stretching towards North prime real estate development is expanding on the road to INDIRA NAGAR- The Life line of Kanpur.

Design, Comfort, Style and Space. All in one vicinity coming together in a symphony at Yash Lifespace - your own place A place you can call "Home". A place where you cherish what you desire. A place which gives you a sense of higher the abode of "GOD"

Welcome to the very epitome of fine Architecture at Yash Lifespace a cluster of Luxury 3&4 BHK Apartment, with a gracefully and creatively designed, in a private, peaceful and serene environment. Situated near Rain Water Harvesting Theme Park. Yash Lifespace is a beautiful amalgamation of luxury and comfort which are delightful to the mind, body and soul.





**Structure-** Earthquake resistant  
RCC structure

(Govt. Institution Approved)

**Roof terrace-** marble finish terrace

**External fittings-** water proof paint as per elevation

**Driveway-** inter locking pavers/  
checkered tiles/RCC

**Common power backup-** 24x7 hrs.  
100% power backup for lift & common area facility by solar power and genset

**Electrical** – concealed conduit with copper wires. Modular switches & socket. All circuits protected by MCB. Power points for AC in drawing / dining, bedrooms & sockets for TV & telephone outlet in drawing/ dining, bedroom.

**Lifts**– high speed elevators

**Utility & facility-** piped gas supply

**Security-** 24 hours main gate security

**Fire protection-** fire protection as per latest norms

**Water supply-** water supply through water head tank connected through water softener plant



**Master bedroom/bedroom/drawing & dining-**

**Flooring:** vitrified Tiles

**Walls:** Wall Putty & Paint

**Internal/external doors:** Wooden door frame with decorated flush doors with branded fittings

**Windows:** wooden frame with teak wood shutter with MS grill & branded fittings



- 
- **Kitchen- flooring:** Vitrified Tiles,
- Walls: Designer Glazed tiles upto 2fts.
- Counter top, Ceiling: Birla Putty
- **Toilets- Flooring:** Designer non skid tiles Walls: Designer glazed tiles upto 7fts.
- **Internal/external doors:** wooden door frame with flush door with branded fittings
- **Windows:** wooden frame with teak wood shutter with MS grill & branded fittings
- **Others:** Designer granite counter with wash basin, premium quality EWC and branded elegant CP fitting



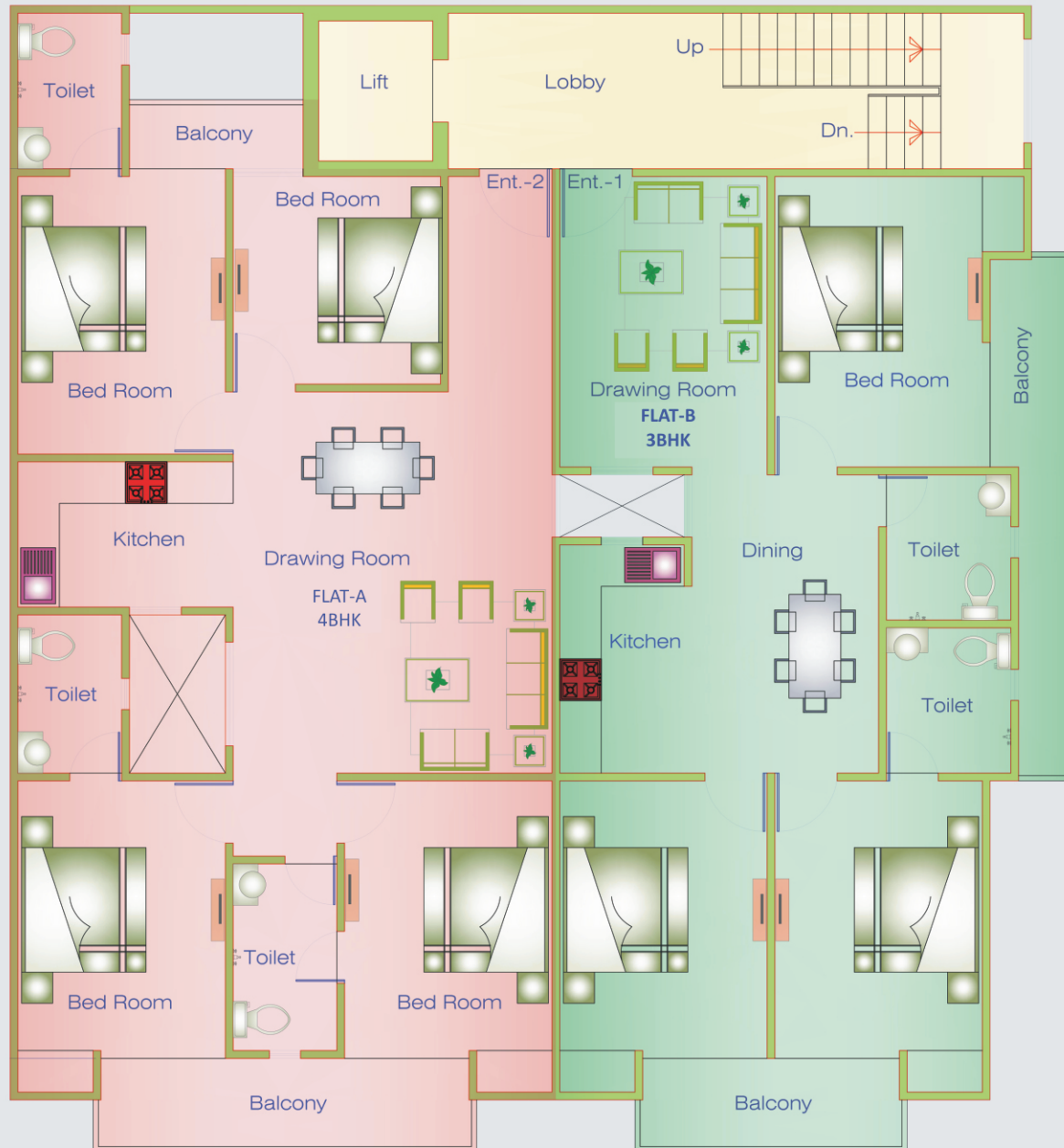


**Premium Residential Apartment 4&3BHK - Flat-A (1530 Sq.ft.), Flat-B (1310Sq.ft.) @ Indira Nagar**

While it is common to come across developers who offer small cramped flats which do not end up serving adequate space requirement, our innovation in building apartment came in as much needed freshness in the residential space.

With a total area about 15860 sq.ft, we feel humble to have already received encouraging response from the time we have opened booking, and feel proud with our contribution in helping loving families like yours to find their sweet abode.

# TYPICAL FLOOR PLAN



# Luxurious Detailing :

We constantly make an effort to inculcate global best practices in our project and services while including latest technological advancement & innovation which may benefit to our customer.

- Installing of LED light for reduced power consumption
- Rain water harvesting plant
- Procurement & usage of branded raw material and fixtures ensuring durability and efficiency
- Provision of adequate internet and Wi-Fi services
- Tie-ups with leading financial institutions for purchase assistance
- Anti terminate treatment
- Decorative entrance lobby
- Enabling a team of qualified & expert professionals which help a customer through the entire purchase process of an offering
- First of its kind after sales support
- Before time possession
- CCTV integrated with cable TV
- Centralized intercom facility
- Ready cable connection
- Concealed copper wiring with circuit breakers



# THE BRANDS WE ARE PROUDLY ASSOCIATED WITH

## Paint & Putty



## Wire & Cables



## Cement



## Faucets & Fit



## Tiles



## Switches



## Sink



## Pipes



## Tanks



## Steel



## Solar Panel



## C.C.TV And Video Door Phone



## AAC Block



## Doors By



## Fire Service



## Waterproof Plaster And Block Jointer



\* THE PRODUCTS MAY VARY DEPENDS ON AVAILABILITY



**Office Address :**

Office No. 5, 6, 7, 8 Galleria Market, Vikas Nagar, Kanpur- 208 024

**For Booking Please Contact :**

+91-9519307201, +91-9519307210, +91-9519307200

**For Online Booking Please Contact**

Web : [www.lifespacehomes.in](http://www.lifespacehomes.in) | E-mail : [care@life.spacehomes](mailto:care@life.spacehomes)

[facebook.com/LifeSpacehomes](https://www.facebook.com/LifeSpacehomes) [instagram.com/LifeSpacehomes](https://www.instagram.com/LifeSpacehomes)

\*All the information is strictly for guidance purpose only and does not constitute part of an offer or contract.

\*All visuals/ photographs used in this brochure are artists impression.

\*All specifications, sizes and layouts are tentative and subject to such variation, additions and modifications as decided by the Architects or by the Promoters.